

FSUE Rosmorport

**Ice breaking services during winter navigation in
Russian ports
of the Gulf of Finland**



Rotterdam, September 2011

ENTERPRISE MISSION

- To contribute to the development of the marine transport infrastructure of the Russian Federation and competitive growth of the Russian sea ports by means of the effective operation, maintenance and development of the federal property, allocated to the enterprise in the sea ports
- To actively participate in realization of the Federal Target Programs of marine transport development of the Russian Federation
- To render services of safety shipping in water area of the sea ports and at port approaches



«Vaigach»

«Ermak»

«Kaptain Sorokin»

«Kaptain Dranitsin»

«Kaptain Nikolaev»

«Moscow»

«Saint-Petersburg»

«Mudyug»

«Karu»

«Ivan Kruzenshtern»

«Kaptain Zarubin»

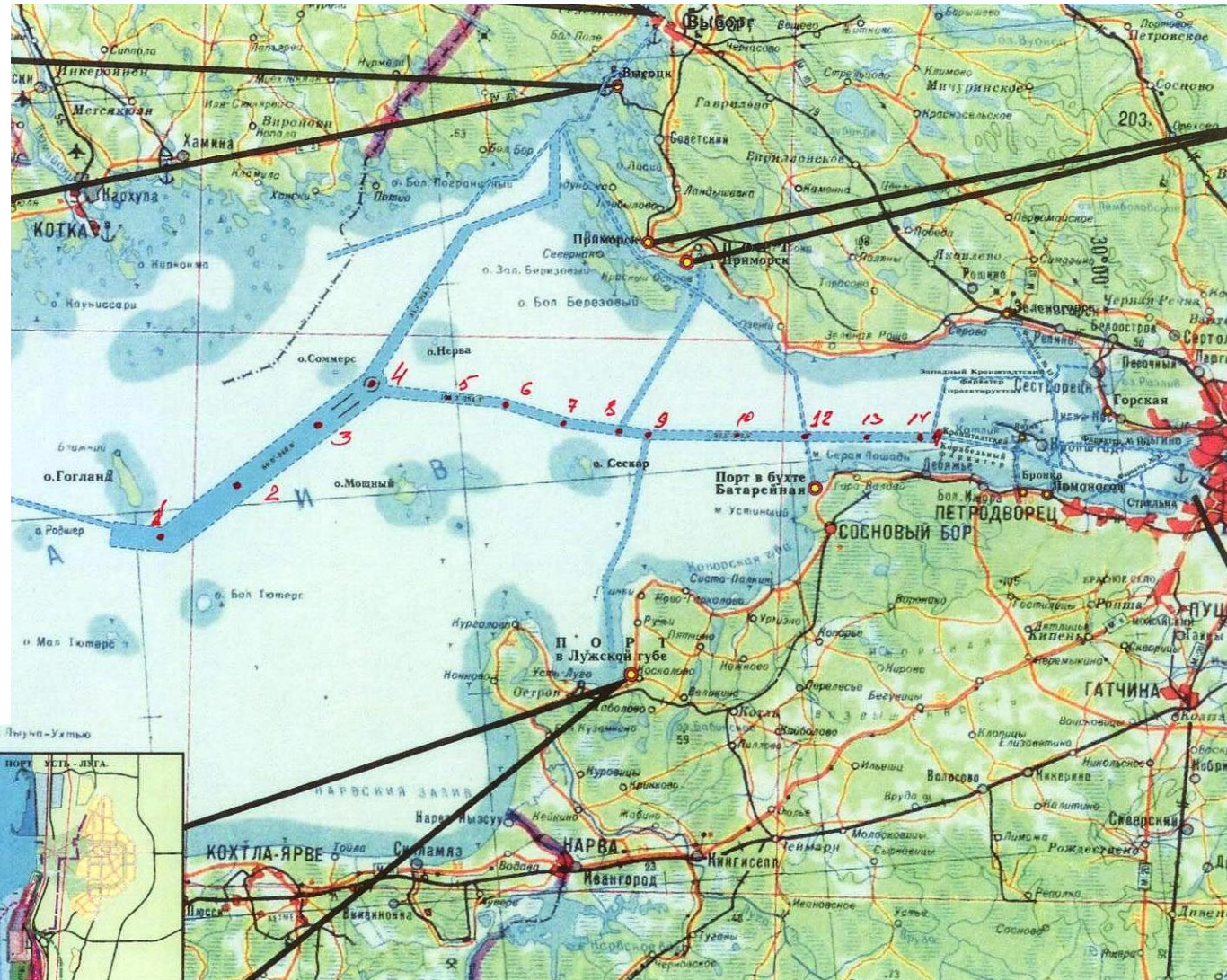
«Kaptain M. Izmailov»

«Semen Dejnev»

«Yuri Lisyansky»

«Kaptain Plakhin»

Operation area and icebreakers group in the Gulf of Finland



Icebreakers operated in the Baltic sea

Open sea icebreakers



**Captain Sorokin (34) Captain Nikolaev (33)
Captain Dranitsin (31)**
Power – 18,2MW



Ermak (37)
Power – 30,4MW



**Moscow (3)
Saint-Petersburg (2)**
Power – 16MW



Icebreakers operated in the Baltic sea

Auxiliary icebreakers



Mudyug (29)
Power – 7,1MW



Tor (47)
Power – 8,1MW

Harbor icebreakers



Semen Dejnev (40)
Ivan Kruzenshtern (47)
Yury Lisyansky (45)
Power – 3,5MW



Captain Zarubin (33)
Captain Plakhin (34)
Power – 3,3MW



Captain Izmailov (35)
Power – 2,5MW



Karu (52)
Power – 6,5MW



Volumes of transportation and vessel calls in the ports of the Gulf of Finland during winter navigation seasons of 2008-2011

Navigation	2008-2009		2009-2010		2010-2011		Forecast 2011-2012
Ports	Volume of transportation, in thousand tons	Ship calls	Volume of transportation, in thousand tons	Ship calls	Volume of transportation, in thousand tons	Ship calls	Volume of transportation, in thousand tons
Saint Petersburg	17 337	4 611	19 572	4 134	21 766	4 566	22 000
Primorsk	32 907	770	31 698	762	31 856	1 072	32 000
Ust'-Luga	3 172	566	4 370	484	5 593	784	13 000
Vyborg (transit including)	410	421	443	246	361	306	400
Vysotsk	700	225	720	147	1 069	180	1 500
Vysotsk RPK-2	3 500	372	3 625	335	3 529	224	4 000
TOTAL	58 026	6 965	60 428	6 108	64 174	7 132	72 900



THE MAIN STATEMENTS OF THE EXPANSION CONCEPT OF RUSSIA FLEET WITH ICEBREAKERS OF NEW TYPES

1. Substantiation of every type of icebreaker is made within the frame of general concept of building of icebreakers of all types and purposes:

Group 1 – nuclear-powered icebreakers;

Group 2 – diesel-powered open sea icebreakers;

Group 3 – auxiliary icebreakers.

Group 4 – harbor and river icebreakers.

2. Consideration of the specific particularities of the sea basins:

Operational tasks;

Shipping conditions and navigational limitations.

3. Prototypes and numerical composition guarantee reliable service for transport vessels during potential cargo transportation considering:

Increase of shipping traffic in winter time;

Writing-off used icebreakers.

4. The ways of reducing financial burden at concept realization:

Reduction the quantity of types;

Realization of multipurpose principal



General programme of fleet renewal with icebreakers of all types and purposes



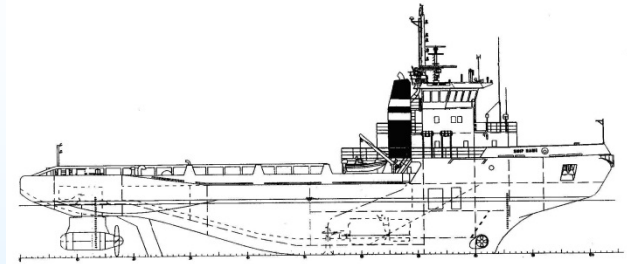
1. Multipurpose 60MW nuclear powered icebreaker (LK-60Ya)



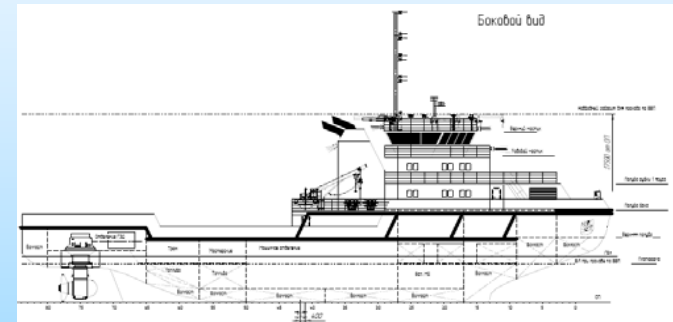
2. 25MW Diesel-powered icebreaker



3. 16MW icebreaker for non-arctic waters



4. About 7MW auxiliary icebreaker (LK-7)



5. About 4MW harbor icebreaker (LK-4)



6. Shallow-draft icebreaker for the South basin





Thank you for your attention

**127055, Sushevskaya str. 19, b. 7, Moscow, Russia
Phone: +7 (495) 626-14-25, Fax: +7 (495) 626-12-39
www.rosmorport.ru**